

PRODUCT CATALOG



2011

ADA COMPLIANT EMERGENCY PHONES/INSTALLATION/MONITORING/MAINTENANCE

1.866.354.6473 / email: sales@kingsiii.com

GSA Advantage!

KINGSIII
EMERGENCY COMMUNICATIONS

WHAT ARE YOUR EMERGENCY COMMUNICATION NEEDS?

KINGS III SERVICES	> 2
ELEVATOR PHONES	> 3
SITECONNECT PHONES	> 5
PHONELINE VERIFIER	> 6
ONLINE REMOTE MONITORING	> 7
STAIRWELL PHONES	> 8
AREAS OF REFUGE PHONES	> 8
GARAGE PHONES	> 8
POOL PHONES	> 9
AED	> 9
CAMPUS EMERGENCY PHONES	> 10

Kings III of America

751 Canyon Drive
Suite 100
Coppell, Texas 7501
1.800.354.6473
www.kingsiii.com

Kings III Services



Kings III is the Nation's leading provider of emergency communication solutions making us the ideal choice for complete, turnkey emergency telephone/intercom needs.

As code requirements tighten, it becomes more important to trust an emergency phone expert when choosing among the myriad solutions available. All Kings III products are developed, designed and manufactured in the USA. Our in-house engineering team makes sure each product meets or exceeds national, state and local codes including accessibility and health codes.

In addition to the sale of emergency telephone and intercom hardware, we offer **installation, maintenance/repair** and **monitoring/dispatch** services nationwide. As the only full-line emergency phone manufacturer to offer these services, you can be assured that our extensive field experience is reflected in the design of our products.

The Kings III Emergency Dispatch Center and our fully-redundant Disaster Recovery Center provide professional, reliable emergency telephone answering and dispatch services around the clock. Every operator is trained to handle emergency calls and is Red Cross CPR certified and shift supervisors are Advanced Emergency Medical Dispatch certified. All calls are automatically digitally recorded and permanently archived for your protection.

Whether you simply need robust, reliable emergency communication hardware or maintenance, installation or monitoring services, Kings III is your single point of contact. Combining state-of-the-art design and manufacturing with industry leading facilities and procedures results in the clear choice for all of your emergency communication needs.

Delivering services through technology to help people

Elevator SafeCall Phones



A



B



C



D



A) SM-3000 Surface Mount Phone

Brushed stainless steel fits inside existing elevator cab phone cabinet.

4¼" wide × 7¼" high × 2⅛" deep

► Unit Price: \$260

B) SC-3000-U Universal Retrofit C.O.P. Mount Phone

Phone circuit board, speaker and universal mounting plate for installation behind any car station. Ideal for replacement and retrofit applications. This is *the* phone to carry on service vehicles.

4¾" wide × 9½" high × 2" deep

► Unit Price: \$230

C) SC-3000 C.O.P. Mount OEM Style Phone

Phone circuit board, speaker, microphone and mounting plate for installation behind any car station.

3¾" wide × 7" high × 2" deep

► Unit Price: \$230

D) FM-3000 Flush Mount Phone

Brushed stainless steel, flush mounts for a clean profile and can completely replace the phone cabinet.

Three standard sizes:

6" wide × 9" high, 10" wide × 12" high, 11" wide × 14" high

Standard sizes in stock. Custom sizes and finishes available.

Call for pricing. Allow 4-6 weeks for delivery of custom items.

► Unit Price: \$280

Retrofit other manufacturer's mounts and housings with modern SafeCall technology

Elevator SafeCall Phones



E

SafeCall Emergency Phones Feature:

- ▶ Rugged design and construction for unmatched reliability
- ▶ ADA, ASME, and IBC compliant, UL listed and CSA approved.
- ▶ Programmable, automatic testing
- ▶ Dial up to four preprogrammed phone numbers
- ▶ Extended 60-second voice location message
- ▶ On-board keypad for easy programming
- ▶ One year warranty

E) FM-3000-DP Flush Mount Phone-Dover Style

Brushed stainless steel. Direct bolt-on upgrade for Thyssen/Dover black framed phone cabinet door. Upgrades phone to ADA compliant flush mount. A real labor saver.

9" wide × 10 7/8" high

▶ Unit Price: \$300

F) WL-3000 Wheelchair Lift Phone

Complete phone in weather resistant, powder-coated housing. Designed for surface mounting in wheelchair lifts. Cellular model is ideal where landline service is unavailable, requires access to 120 VAC or 12 VDC power.

4 3/8" wide × 9 5/8" high × 2 3/8" deep

▶ Unit Price: \$350 ▶ Unit Price: WL-3000-C Cellular \$750

F



For orders call 1.866.354.6473 / email: sales@kingsiii.com

Elevator SiteConnect

SiteConnect Lobby Intercom Kit

- ▶ One CN-8 Router
- ▶ One IP-3000 Lobby Intercom

LBK-1 Kit Price: \$749

SiteConnect Master Station Kit

- ▶ One CN-8 Router
- ▶ One MST-4 Master Station

MSK-1 Kit Price: \$799

Select phones and options listed at right.



A) CN-8 Router (Required)

CN-8 Router supports up to 8 SafeCall ADA phones on a single phone line and offers the industry's only ASME compliant solution with back-up line capability. Enables simultaneous communication with all ADA phones. Requires less homerun wiring than competing models, saving labor costs.

8" wide × 9" high × 3" deep

▶ Unit Price: \$699

B) Elevator Phone (Required)

All SafeCall series emergency telephones are compatible with the SiteConnect system. See prior pages for complete model descriptions. Standard finish is #4 brushed stainless steel. Custom sizes and finishes are available.

Select model(s) and quantity to add to kits above:

- ▶ SC-3000 C.O.P. / Unit Price: \$230
- ▶ SC-3000-U / Unit Price: \$230
- ▶ SM-3000 / Unit Price: \$260
- ▶ FM-3000 / Unit Price: \$280
- ▶ FM-3000-DP / Unit Price: \$300

C) MST-4 Master Station Telephone (Optional)

Any touchtone telephone, on or offsite, can be used as a master station. Our model is a four line phone for use at security desks, engineering, fire control, etc. Master Stations can selectively connect to any single, any combination, or all ADA phones. Connected phones can be added and dropped at will by the master station operator. Also suitable for machine room use.

Product appearance may vary.

▶ Unit Price: \$249

D) IP-3000 Lobby Intercom/Phone (Optional)

Brushed stainless steel, with selector switch, flush mounts for a clean profile. For use as an intercom to communicate with SafeCall ADA elevator phones. Install in the elevator lobby. Specify number of elevators to be attached. Requires SafeCall ADA phones and CN-8 Router. See kit pricing.

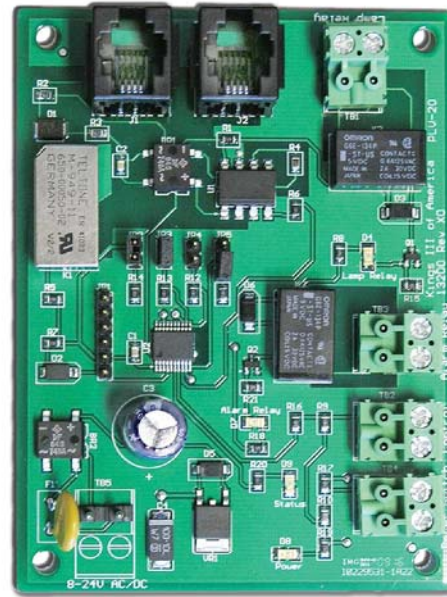
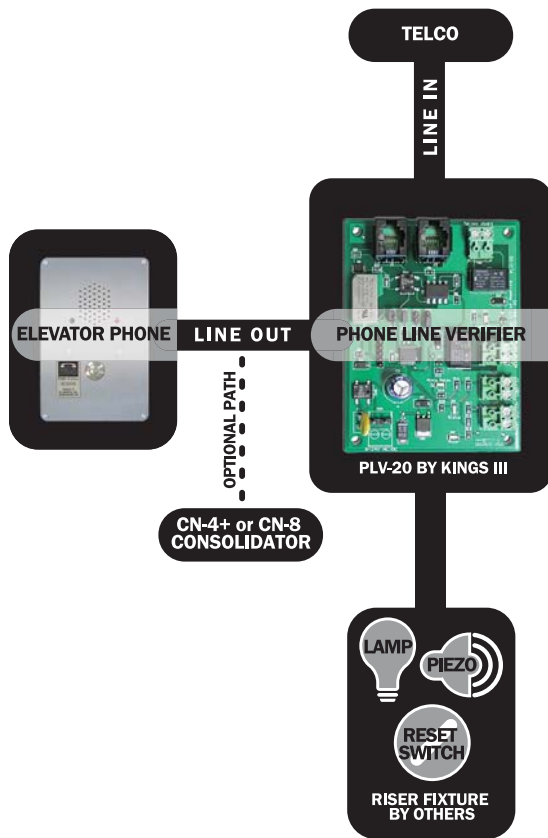
6" wide × 9" high

▶ Unit Price: \$299

▶ Rough-in Box: \$30

Enables simultaneous communication with all SafeCall ADA phones

PLV-20 Phone Line Verifier



SPECIFICATIONS

Application	Loop Start Phone Line Monitoring
Dimensions	3.0 in x 4.0 in (7.62 cm x 10.16 cm)
Power	8-24 Volts AC/DC @ 20VA
Current Draw	Idle (Line okay) = 10ma Active (Reporting dead line) = 100ma
FCC Part 68, TIA-968-A and Industry Canada Certified	

PLV-20 Phone Line Verifier

The technology you need to comply with emerging codes. Telephone line status verification is a requirement of ASME A17.1b-2009 for new or altered elevators. (Section 2.27.1.1.6)

The PLV-20 is designed to detect faults and disruptions in telephone service and provide visual and audible local alerts when a problem is detected. Audible alerts can be silenced. Visual alert automatically resets when phone line is restored.

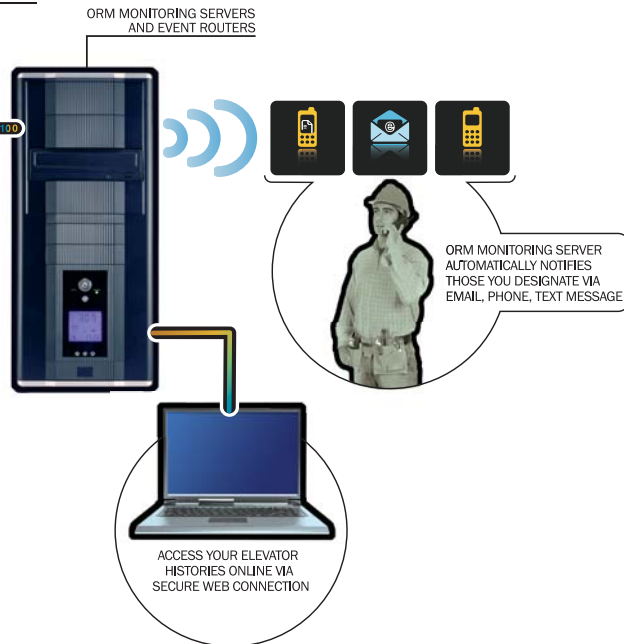
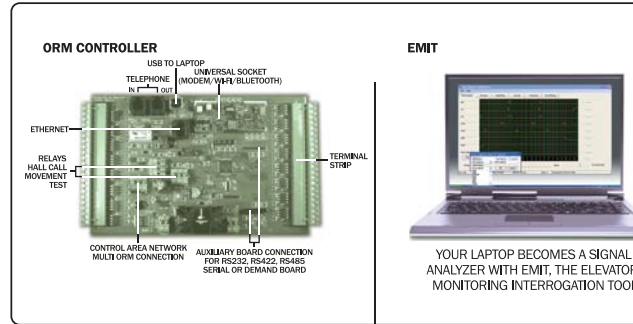
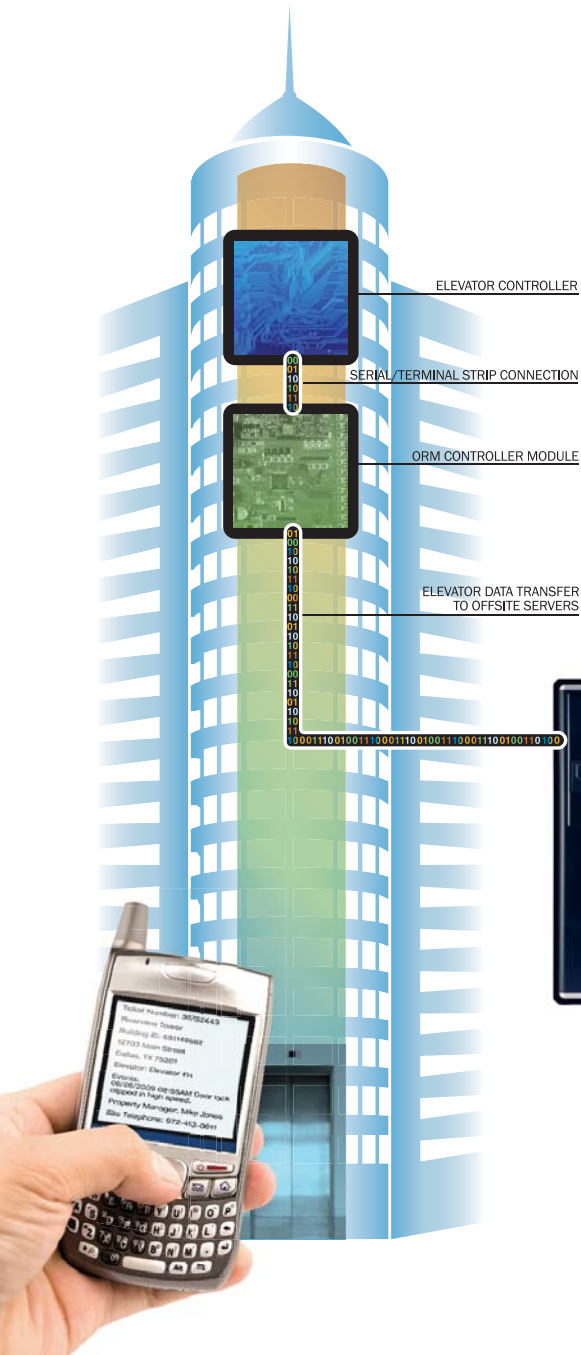
Also suitable for other types of phones such as garage, stairwell or area of refuge telephones.

Note: Requires additional hardware supplied by elevator fixture manufacturers or fixture suppliers.

► Unit Price: \$100

For orders call 1.866.354.6473 / email: sales@kingsiii.com

Online Remote Monitoring



- ▶ Elevator monitoring with Internet based reporting.
- ▶ Universal compatibility makes for easy installation on most controllers.
- ▶ Elevator Monitoring Interrogation Tool (EMIT) software included.
- ▶ Requires no new phone lines because ORM uses the existing ADA line, ethernet or Wi-Fi connection.
- ▶ Affordable initial cost and low monthly monitoring/dispatch notification fee.
- ▶ Quickly alerts you to major elevator events.
- ▶ 24/7 monitoring is a great selling tool.
- ▶ Allows for optimal use of service personnel.
- ▶ Weekly bulk data transfers and secure web accessibility anytime.
- ▶ Redundant event routers and searchable database.
- ▶ 32 Terminal Inputs, or Serial Connection or combination of both. 12-120 Volt AC or DC.
- ▶ 2 Relay Outputs — make elevator hall call to check elevator operation at programmable intervals.
- ▶ Monitors for degrading performance, and notifies you when operations are out of range.
- ▶ Built-in universal socket for multiple means of connection; modem, Ethernet, Bluetooth or Wi-Fi.
- ▶ EEPROM Flashable Memory.
- ▶ Three Event Notification Actions:
 - ▶ Text to voice calling to dispatch emergency services.
 - ▶ Email to notify service department of less urgent conditions.
 - ▶ Text Pager notification for any event.
- ▶ Logic Engine Interprets Monitored Signals to:
 - ▶ Report faults and degraded performance.
 - ▶ Automatically notify mechanics and managers.
 - ▶ Store data for later analysis.
 - ▶ Report operational status.
- ▶ Automatically upgrades Flash Memory in the on-site ORM processor.
- ▶ Enables data accessible via secure Web Server through familiar browser-based human interface.
- ▶ Is easily changeable and customizable to meet your needs. Changing call lists are a snap via secure web connection.
- ▶ Unit Price: ORM Board per Car or Escalator \$299
- ▶ Monitoring, Data Storage and Automated Dispatching:
 - Hydraulic \$9.95/month, Traction \$14.95/month, Escalator \$14.95/month

The Universal Event Notification System for Elevators

Stairwell/Areas of Refuge/Garage Phones



A



B



C



D

A) GM-3000 Garage Phone

Red powder-coated with rugged construction, this model may include a strobe and is ideal for parking garages, stairwells, or building exterior spaces. Cellular service model is ideal where landline service is unavailable.

10¹/₈" wide × 12¹/₂" high × 5" deep

- ▶ Unit Price: \$369 ▶ Unit Price: GM 3000-C Cellular \$569
- ▶ SP-3000-2B Exterior Phone Two-Button Option add \$100
- ▶ SLK Strobe Light (SLK-12 — 12 VDC or SLK-120 — 120 VAC) add \$310

B) SSP-3000-S Stairwell Surface Mount Stainless Interior Phone

Red powder-coated housing with stainless steel faceplate for surface mounting in stairwells or parking garages.

8" wide × 10" high × 3⁵/₈" deep

- ▶ Unit Price: \$379 ▶ Unit Price: 3000-S-FM Flush Mount: \$349
- ▶ Two-Button Option add \$100
- ▶ SLK Strobe Light (SLK-12 — 12 VDC or SLK-120 — 120 VAC) add \$310

C) SSP-3000-R Stairwell Surface Mount Red Interior Phone

Red powder-coated housing for surface mounting in stairwells, parking garages, or areas of refuge/rescue.

8" wide × 10" high × 3⁵/₈" deep

- ▶ Unit Price: \$299 ▶ Unit Price: 3000-R-FM Flush Mount: \$269
- ▶ Two-Button Option add \$100
- ▶ SLK Strobe Light (SLK-12 — 12 VDC or SLK-120 — 120 VAC) add \$310

D) RD-3000 Radial Mount Phone

Brushed stainless steel with safe radius edges. Covered parking or stairwell use.

8" wide × 11" high × 3³/₈" deep

- ▶ Unit Price: \$369



Strobe Light Option

Steady-on locator beacon, and flashing blue strobe light with wall mount bracket.



Two Button Option

The addition of a second call button for placing non-emergency calls.

Pool and AED Phones



A



B



C



D

A) SP-3000 Exterior Phone

Red powder-coated weather resistant housing holds up in poolside or other extreme environments. Cellular model is ideal where landline service is unavailable.

10¹/₈" wide × 12¹/₂" high × 5" deep

► Unit Price: \$369 ► Unit Price: SP-3000-C Cellular \$569

B) SP-3000-2B Exterior Phone

Identical to the SP-3000 with the addition of a second call button to place non-emergency calls. (Option on most models.)

10¹/₈" wide × 12¹/₂" high × 5" deep

► Unit Price: \$469 ► Unit Price SP-3000-C-2B Cellular \$669

C) AED-3000-I AED Cabinet w/Integral Emergency Phone

Provides readily available phone for the AED and automatically calls for help when door is opened saving valuable time in cases of cardiac events. Interior AED cabinet with landline emergency phone. Cellular model is ideal where landline service is unavailable or prohibited.

22" wide × 17¹/₂" high × 7" deep

► Unit Price: \$785 ► Unit Price: AED-3000-IC Cellular \$1070

D) SP-3000-K Emergency Phone with Keypad

Ideal for pool areas where lifeguards need access to phone with keypad or where local jurisdictions require keypad. Note: this unit requires landline telephone service.

10¹/₈" wide × 12¹/₂" high × 5" deep

► Unit Price: \$449.00

For orders call 1.866.354.6473 / email: sales@kingsiii.com

Campus Emergency Phones



Retrofit Service Available.
Retrofit other manufacturer's mounts and housings with modern SafeCall technology. Call for details.

A) **TM-3000 Tower Phone**

Red powder coated steel, weather resistant housing and a 7½-foot tower with steady-on and flashing strobe light. Perfect for parking lots and athletic fields where landline service is not available. Can be customized to be any color(s). Emergency tower phone requires landline telephone and electricity, where not available use cellular option. ▶ Unit Price: \$1,999

Options

TM-3000-C Tower Cellular Phone

Same rugged design as the TM-3000, but uses cellular rather than landline phone service. ▶ Unit Price: \$2,459

TM-3000C-NTC Night Time Charge Phone

A cellular emergency telephone with night time charge circuitry and light pole mounting bracket. Mounts to existing poles and charges off parking lot lighting circuit. ▶ Unit Price: TM-3000C-NTC \$4,300

- ▶ Unit Price: Two-Button Option 2B on any above model add \$100
- ▶ Unit Price: Pole Mount Bracket PMB (non-solar) add \$60
- ▶ Unit Price: Pole Mount Bracket PMBS (solar) add \$100

B) **TM-3000-SC Tower Solar Cellular Phone**

The solar powered, cellular version of the TM-3000. This model is 13 feet tall, and is ideal for use in athletic fields, hiking and jogging trails, lakes and beaches where electricity and landline phone service are unavailable.

Pick the Solar Model Required Based on Winter Sun Duration:

TM-3000-SC-40

Solar Cellular Tower Phone suitable for most applications.

- ▶ Unit Price: \$5,259

TM-3000-SC-80

Solar Cellular Tower Phone for moderate winter sun conditions.

- ▶ Unit Price: \$5,999

TM-3000-SC-120

Solar Cellular Tower Phone suitable for low winter sun conditions.

- ▶ Unit Price: \$6,699

- ▶ Unit Price: Two-Button Option 2B on any model add \$100

- ▶ Unit Price: Pole Mount Bracket PMBS (solar) add \$100

Virtually any color combination available