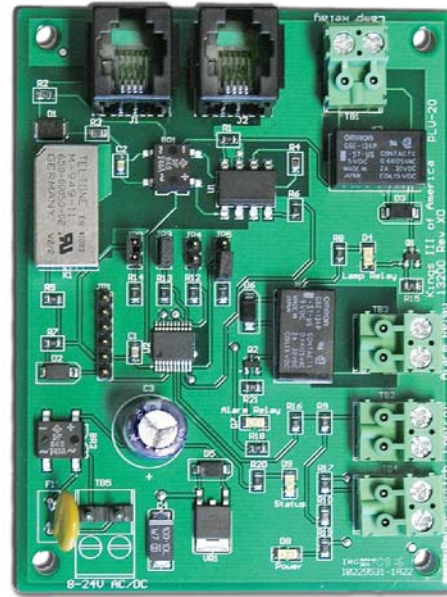
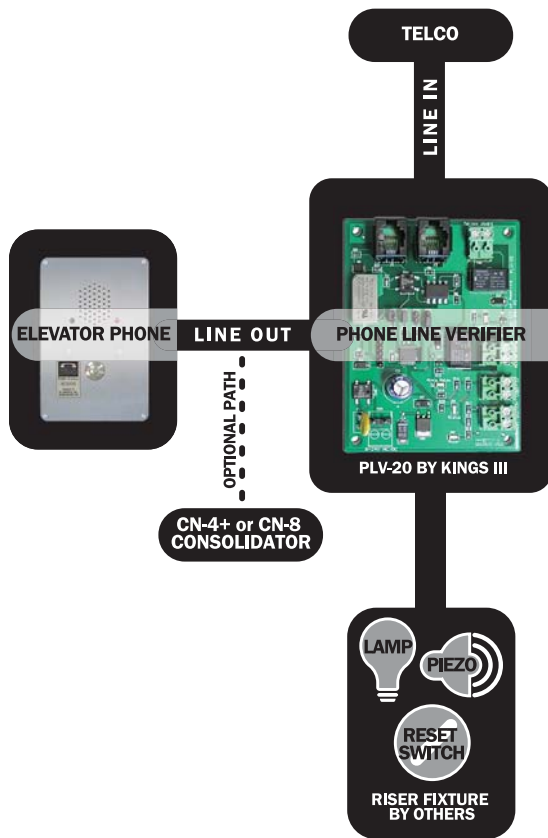


PLV-20 Phone Line Verifier



SPECIFICATIONS

Application	Loop Start Phone Line Monitoring
Dimensions	3.0 in x 4.0 in (7.62 cm x 10.16 cm)
Power	8-24 Volts AC/DC @ 20VA
Current Draw	Idle (Line okay) = 10ma Active (Reporting dead line) = 100ma
FCC Part 68, TIA-968-A and Industry Canada Certified	

PLV-20 Phone Line Verifier

The technology you need to comply with emerging codes. Telephone line status verification is a requirement of ASME A17.1b-2009 for new or altered elevators. (Section 2.27.1.1.6)

The PLV-20 is designed to detect faults and disruptions in telephone service and provide visual and audible local alerts when a problem is detected. Audible alerts can be silenced. Visual alert automatically resets when phone line is restored.

Also suitable for other types of phones such as garage, stairwell or area of refuge telephones.

Note: Requires additional hardware supplied by elevator fixture manufacturers or fixture suppliers.

► Unit Price: \$100

For orders call 1.866.354.6473 / email: sales@kingsiii.com